

CONTAINER VALVE BE 50/BE 80



Container valve BE 50 with drain bolt lock

TECHNICAL DATA

Nominal diameter:	DN 50/80
Face-to-face:	EBRO works standard
Flange accommodation:	according to the connections in container building
Flange surface design:	DIN 2526, Form A-E, ANSI RF
Marking:	DIN EN 19
Tightness check:	DIN 3230 T3 BO, BN (Leakage Rate 1) ISO 5208, Category 3 API 598 Table 5 ANSI B 16-104, Class VI
Temperature range:	-4 °F to + 320 °F (depending on pressure and medium)
Operating pressure:	max. 60 psi
Differential pressure:	max. Δp 60 psi
Body:	Aluminium alloy
Seat:	PTFE
Disc:	Stainless Steel

FEATURES

- Shut-off valve for lugging under containers
- Aluminium body
- Multiple shaft bearing
- Maintenance-free
- Can be disassembled, material-specific recycling possible

GENERAL APPLICATIONS

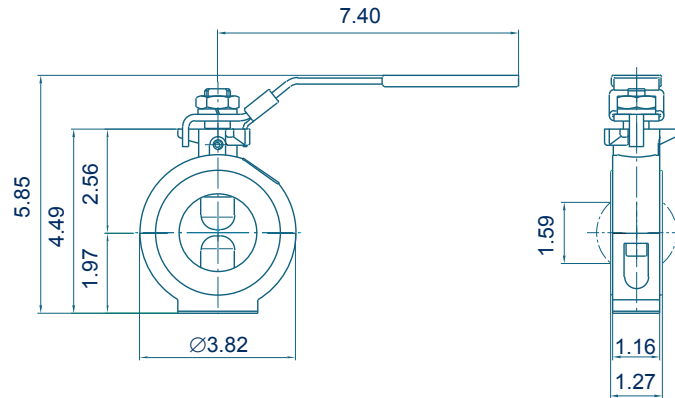
- Container building
- Silos
- Hardous freight container for varnishes, colours, solvents, resins



Container valve BE 80 with Open/Close lever

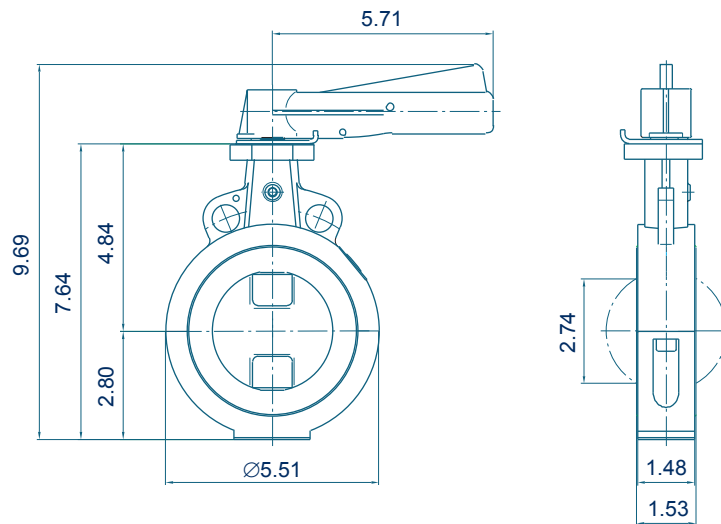
CONTAINER VALVE BE 50/BE 80

BE 50 WITH DRAIN BOLT LOCK



Weight: 2.7 lb

BE 80 WITH HAND LEVER



Weight: 4.5 lb